



SIMPLE LIFE



SIMPLE LIFE



Barnfield Way, Harlow, CM17

£2,150 PCM

Welcome to the Base at Newhall, a brilliant development of properties in a new neighbourhood within three miles of Harlow.

Spread over three floors, the Springham boasts excellent opportunities for family and entertaining.

Walking along from your front door, a quality integrated kitchen is on your right, with a handy WC cleverly placed below the stairs. At the end of the hallway, the door opens up into your stunning living/dining area. With stylish skylights creating a bright and open space, French windows to your private garden allow you to embrace inside-outside living all year around.

On the first floor, one double and one single bedroom sit at opposite ends of the house, with the family bathroom nestled in between.

Up on the second floor you'll find your master ensuite, a perfect parents haven, whilst a further double bedroom with storage cupboard sits to the front of the house.

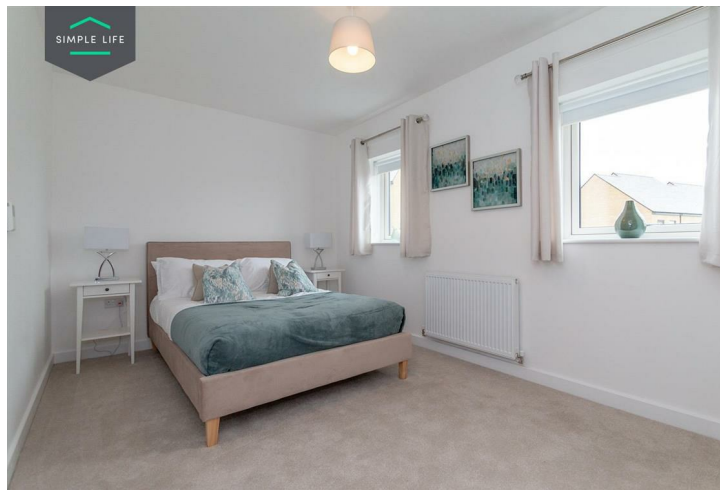
On the border of Hertfordshire, this site within Essex is just 15 miles away from Stansted Airport, whilst London is accessible in under an hour by rail and road, offering you connectivity to wherever you choose to go, for work or play.

Being part of a wider site that will include green spaces and retail areas, there is also the High Street of Old Harlow on your doorstep with a range of independent shops, restaurants and bars.

Use postcode CM17 9LR to get you to the site, situated to the south east of the B183 roundabout with London Road, across from the Mark Hall Sports Centre.

Deposit £2,480
Holding Deposit £490
Unfurnished
Council Tax E
26th January 2026





Key Features

- Car Parking Space
- Dishwasher
- Washing machine
- Cream carpets in the living room
- Private back garden
- Security Alarm
- Fridge-freezer
- Modern kitchen worktops and units
- Brown wood-effect flooring in the kitchen, bathrooms and WC

Location

